



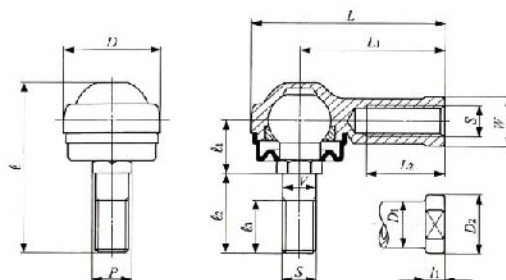
L-Balls



Dimension table . Dimension in mm

Identification Number	Mass (Ref.) g	Boundary dimensions (mm)							
		Thread S	V	D	L	L1	L2	I1	W
LHSA 4	11	M4 x 0.7	*4	14	25.5	18	8	4	8
LHSA 5	27	M5 x 0.8	5	17	38.5	30	16	5	10
LHSA 6	27	M6 x 1	6	19	39.5	30	16	5	10
LHSA 8	64	M8 x 1.25	8	24	48	36	19	5	14
LHSA 10	106	M10 x 1.25	10	28	57	43	23	6.5	17
LHSA 10 M	106	M10 x 1.5	10	28	57	43	23	6.5	17
LHSA 12	180	M12 x 1.75	12	34	67	50	27	6.5	19
LHSA 14	260	M14 x 2	14	38	76	57	30	8	22

- The item marked *is manufactured with a neck diameter of \varnothing 3.4. The item marked **is manufactured with a diameter of \varnothing 5.5 instead of a width across flats.
- Provided with prepacked grease.



<i>D1</i>	<i>D2</i>		<i>P</i>	<i>l₁</i>	<i>l₂</i>	<i>l₃</i>	Ball dia.	Static load capacity <i>C_s</i> (N)
8	10	19.5	**5.5	7	7	5	8	836
10	12	32.5	8	12	13	10	11.112	1 121
10	12	32.5	8	12	13	10	11.112	1 586
13	16	41.5	10	14.5	17	12.5	15	4 161
15	19	49	12	16	21	17	19.05	7 030
15	19	49	12	16	21	17	19.05	7 030
17.5	22	64	14	20	30	20	22.225	9 405
20	25	72	17	22.5	33.5	22	25.4	13 870